

**South Bay Salt Pond
Restoration Project**

**Alviso Ponds and Santa Clara County
Working Group Meeting**

San Jose/Santa Clara WPCP

June 6, 2007

1

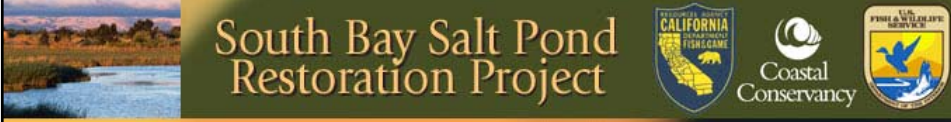


**South Bay Salt Pond
Restoration Project**

Today's Working Group Meeting

- Welcome and Introductions
- Working Group Charter
- SBSP Project Schedule
- FWS NWR Compatibility Determinations
- Phase 1 in the Alviso Pond Complex
- South SF Bay Shoreline Study
- Outreach Opportunities
- Next Steps

2



South Bay Salt Pond Restoration Project

**Alviso Ponds and Santa Clara County
Working Group Charter**

See Handout

3



South Bay Salt Pond Restoration Project

Project Schedule
(pending review of comments)

- Final EIS/EIR – Late Summer/Fall 2007
- Record of Decision and Permitting – End of 2007
- Phase 1 Implementation – 2008 and 2009
- Future actions and phases – the next 30+ years

4

Don Edwards San Francisco Bay National Wildlife Refuge

Where Wildlife Comes First!

5

Compatibility

- By law, Wildlife Refuges are closed to all public uses unless the use is found appropriate and compatible.
- Only wildlife and habitat improvement projects are allowed.

6

How Do We Create Balance between Use of Refuge by Public and protection of wildlife?

- We start by considering the laws & regulations governing what is allowed on the Don Edwards San Francisco Bay NWR.

7

Appropriate Use & Compatible?

- Congress requires that Refuge Managers determine if proposed projects & activities are compatible with the **purpose of the Refuge & Refuge System.**

8

Mission of Refuge System

Administer network of lands/waters for:

- Conservation,
- Management,
- Restoration of fish, wildlife and plant resources and their habitats for the benefit of present and future generations of Americans

9

Purposes of Don Edwards Refuge

- Preserve and enhance wildlife habitat in south San Francisco Bay;
- Protect migratory waterfowl and Endangered Species; and
- Provide an opportunity for wildlife-oriented recreation and nature study

10

Compatibility Determinations

1st step: Consider needs of wildlife and potential for impact on wildlife.

- **Balance wildlife needs**
 - Balance the needs of endangered species with resident and migratory wildlife.
 - Then look for opportunities for public access.

11

Priority Public Uses

2nd Step: Consider priority uses

- **Congress established 6 Wildlife-Oriented Public Uses that take priority over all others:**
 - Wildlife observation & photography,
 - Interpretation & environmental education,
 - Hunting & fishing.

12

Resources Available?

3rd Step: Are resources available to administer and manage each use?

- Is there staff and money to construct and maintain the public use facilities?

13

Other Considerations?

- NEPA (National Environmental Policy Act),
- Endangered Species Act,
- Migratory Bird Conservation Act,
- Clean Water Act
- Coastal Zone Mgt. Act

14

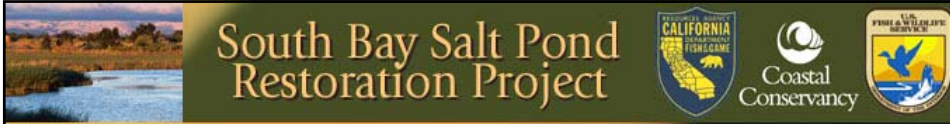
Public Input

Make determination on what is appropriate and compatible based on **public input**, facts as included in EIS/R, written compatibility determination and Refuge Manager's best professional judgment.

15

Questions

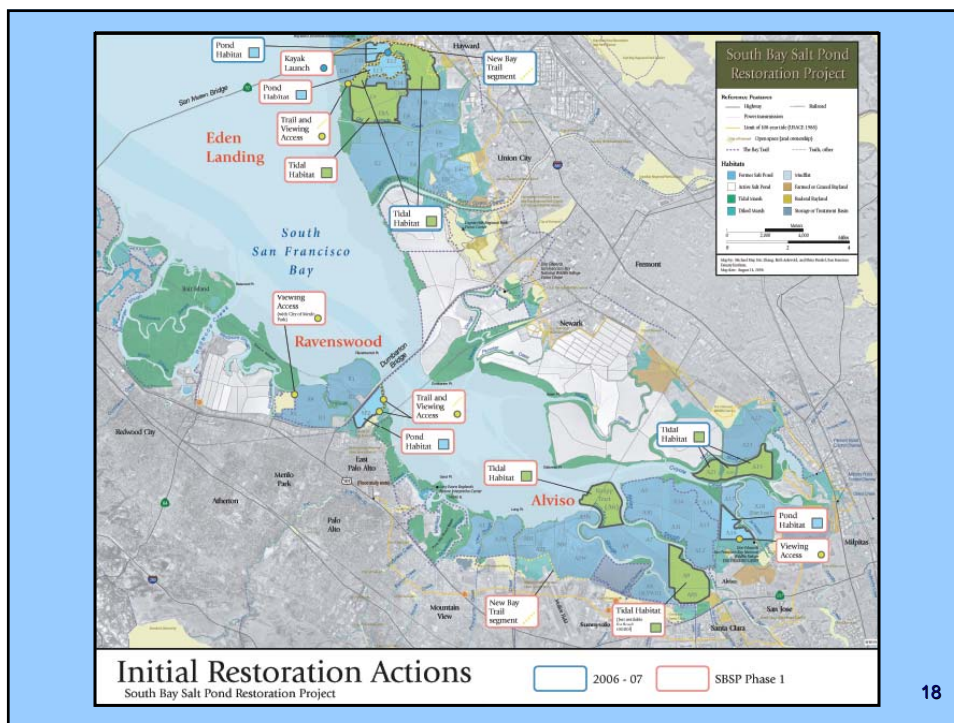
16

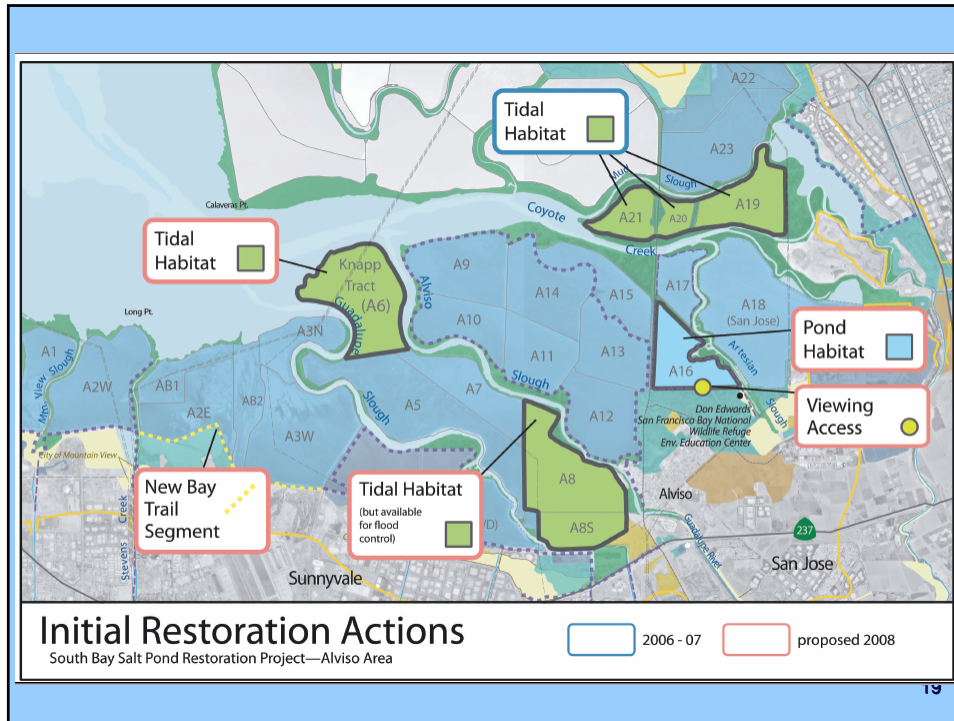


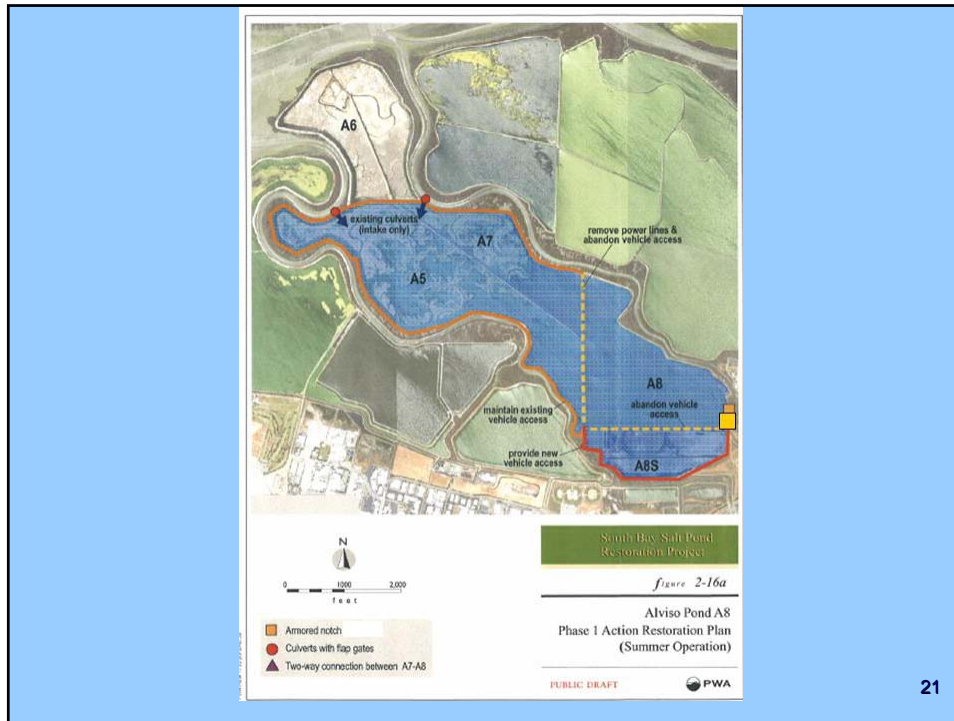
South Bay Salt Pond Restoration Project

Phase 1 in the Alviso Ponds Complex

17





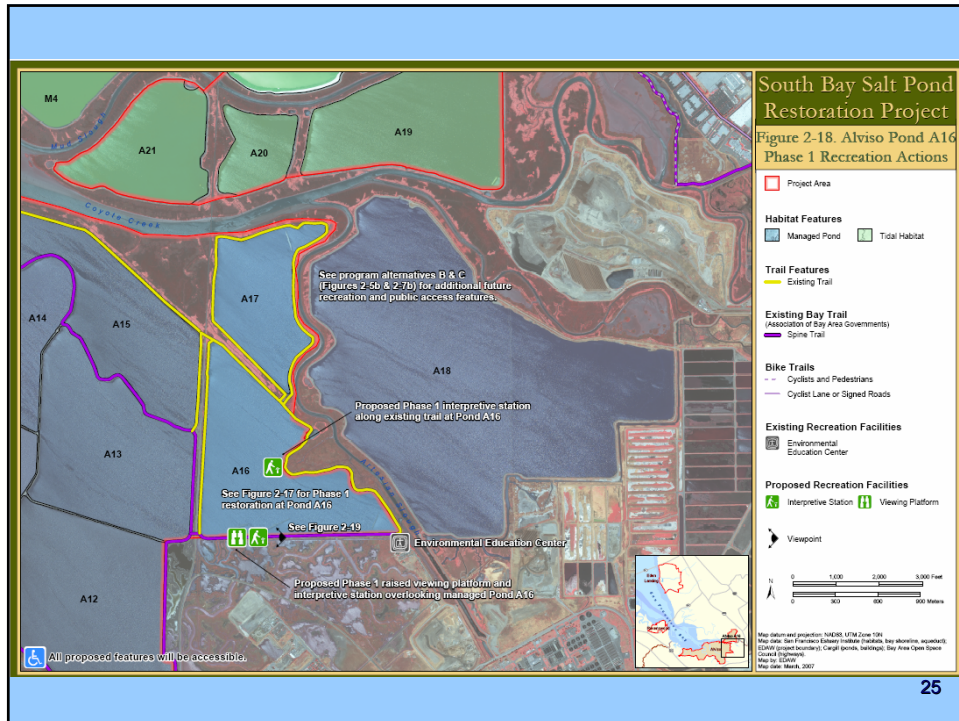


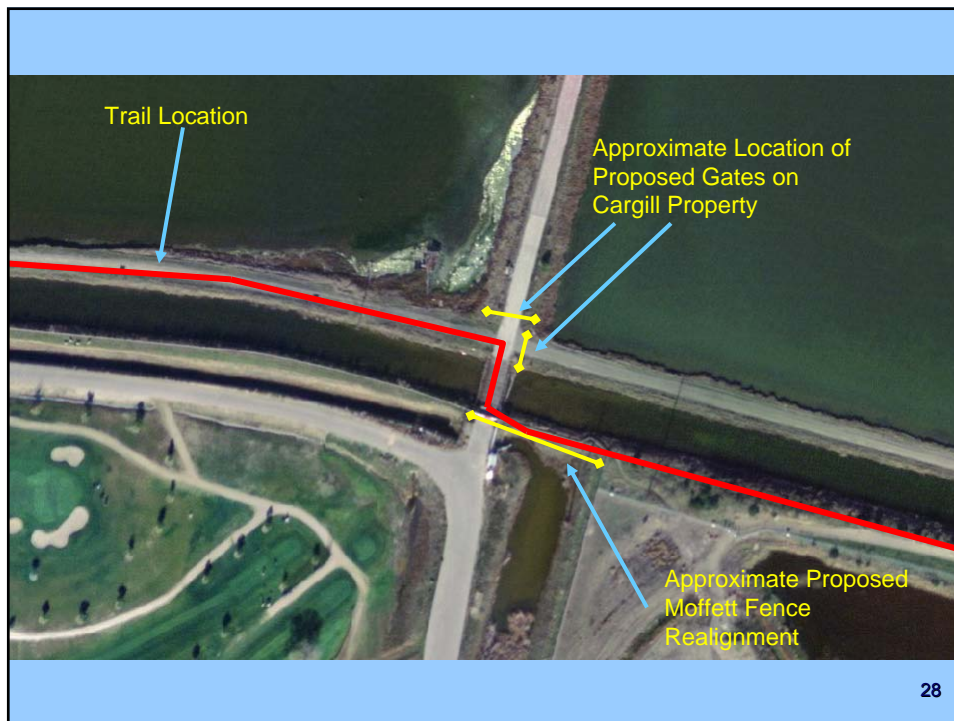
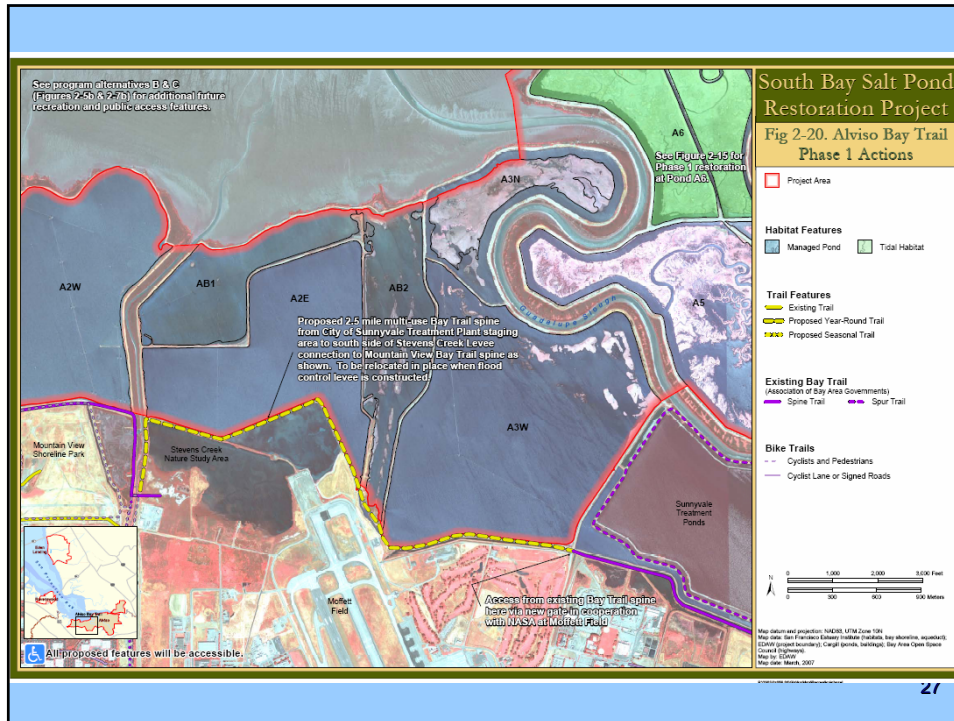
21

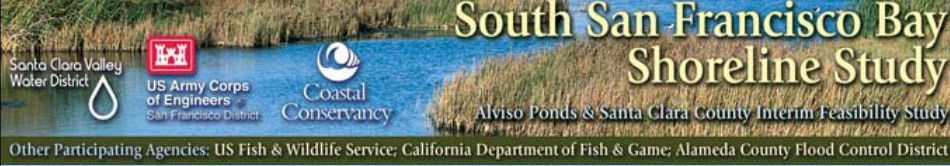


22









**South San Francisco Bay
Shoreline Study**
Alviso Ponds & Santa Clara County Interim Feasibility Study

Other Participating Agencies: US Fish & Wildlife Service; California Department of Fish & Game; Alameda County Flood Control District


Shoreline Study Status Report

Briefing to the Alviso Ponds and Santa Clara
County Working Group

Beth Dyer & Yvonne LeTellier

June 6, 2007

29



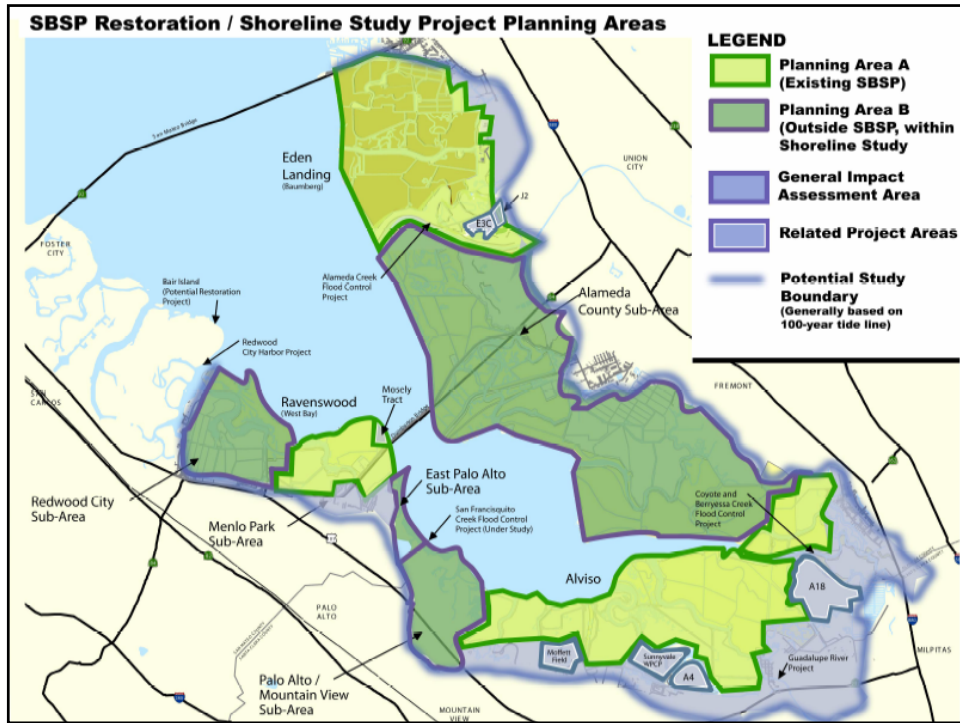
**South San Francisco Bay
Shoreline Study**
Alviso Ponds & Santa Clara County Interim Feasibility Study

Other Participating Agencies: US Fish & Wildlife Service; California Department of Fish & Game; Alameda County Flood Control District

Shoreline Study Overview

- What is it?
 - Federal Project
- Authorized in 2002; Funded in 2003
 - Tidal and fluvial flood damage reduction
 - Environmental Restoration
 - Other purposes

30



South San Francisco Bay Shoreline Study
Alviso Ponds & Santa Clara County Interim Feasibility Study

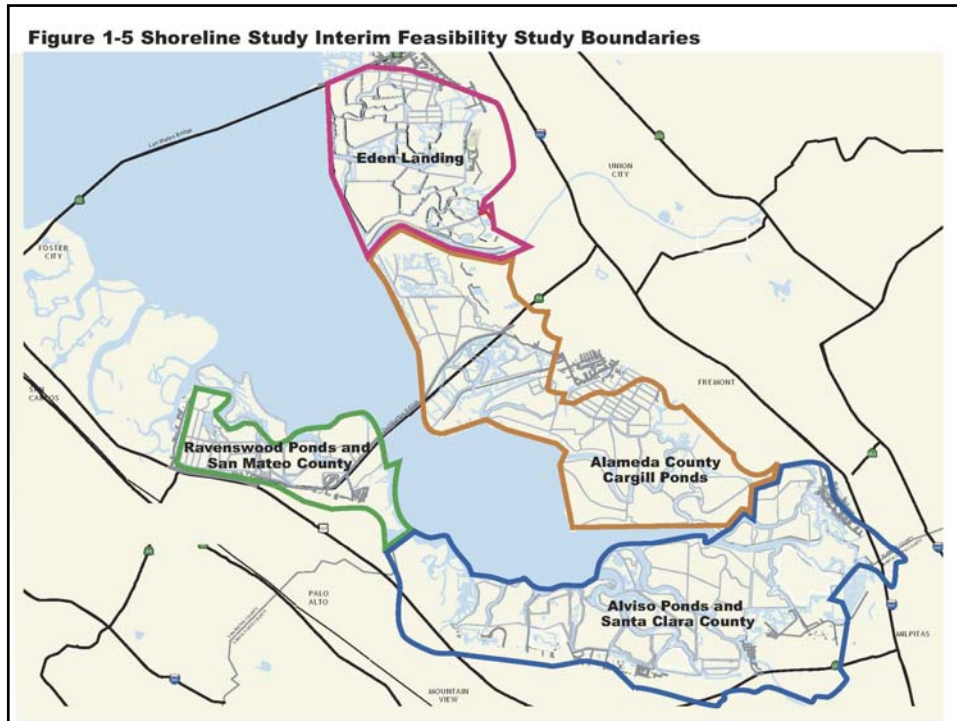
Santa Clara Valley Water District | US Army Corps of Engineers San Francisco District | Coastal Conservancy

Other Participating Agencies: US Fish & Wildlife Service; California Department of Fish & Game; Alameda County Flood Control District

Shoreline Study Overview (continued)

- Reconnaissance Study
- Feasibility Study – focused area because:
 - Expensive to address entire area

32



South San Francisco Bay Shoreline Study
Alviso Ponds & Santa Clara County Interim Feasibility Study

Santa Clara Valley Water District | US Army Corps of Engineers San Francisco District | Coastal Conservancy

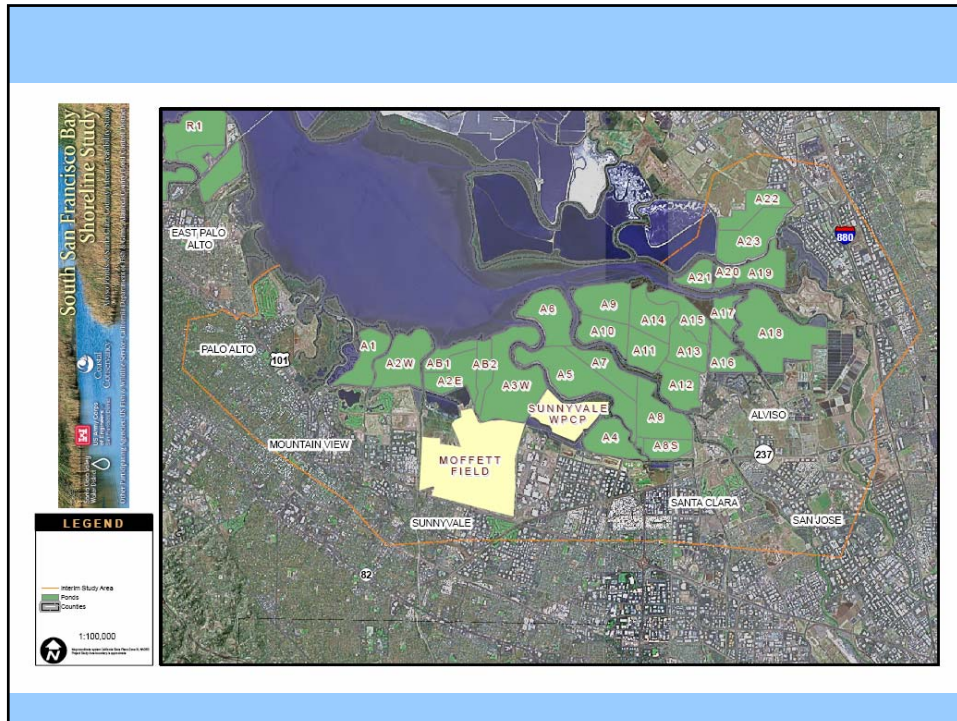
Other Participating Agencies: US Fish & Wildlife Service; California Department of Fish & Game; Alameda County Flood Control District

Shoreline Study Overview (continued)

- Reconnaissance Study
- Feasibility Study – focused area because:
 - Expensive to address entire area
 - High flood risk
 - Available local sponsors: SCVWD & Conservancy
 - Largest acreage
- “South San Francisco Bay Shoreline Alviso Ponds/Santa Clara County First Interim Feasibility Study” = Shoreline Study

... for now

34



South San Francisco Bay Shoreline Study
Alviso Ponds & Santa Clara County Interim Feasibility Study

Other Participating Agencies: US Fish & Wildlife Service; California Department of Fish & Game; Alameda County Flood Control District

Linkage Between Shoreline Study & SBSP Project

- Shared Purpose: habitat restoration, flood protection & public access in South Bay
- Shared Personnel:
 - Shoreline Study Management Team: Conservancy, SCVWD, Corps, & FWS
- Terminology

36

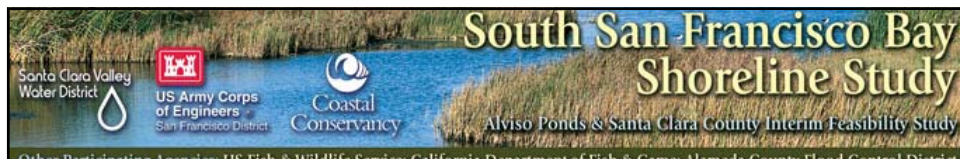


South San Francisco Bay Shoreline Study
Alviso Ponds & Santa Clara County Interim Feasibility Study
Other Participating Agencies: US Fish & Wildlife Service; California Department of Fish & Game; Alameda County Flood Control District

SBSP & Shoreline Study Integration: Habitat

| SBSP | Shoreline |
|---|---|
| <ul style="list-style-type: none">• Create, restore, enhance habitat:<ul style="list-style-type: none">– Special status plant and animals– Migratory bird species– Native species (aquatic & terrestrial) | <ul style="list-style-type: none">• Restore habitat quantity, quality and connectivity:<ul style="list-style-type: none">– Special status species– Migratory bird species– Native species (aquatic & terrestrial) |

37

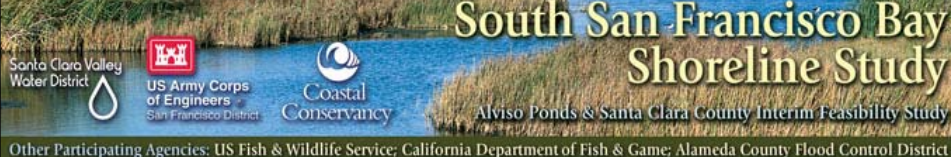


South San Francisco Bay Shoreline Study
Alviso Ponds & Santa Clara County Interim Feasibility Study
Other Participating Agencies: US Fish & Wildlife Service; California Department of Fish & Game; Alameda County Flood Control District

SBSP & Shoreline Study Integration: Flood Protection

| SBSP | Shoreline |
|---|--|
| <ul style="list-style-type: none">• Maintain or improve existing levels | <ul style="list-style-type: none">• Reduce flood damages• Reduce risk to public health & safety |

38

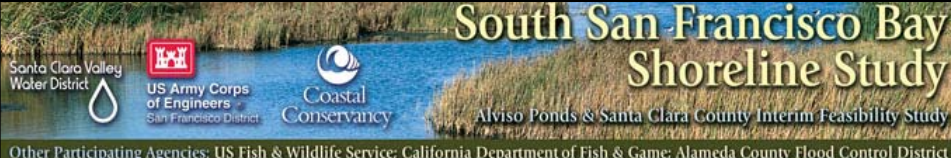


South San Francisco Bay Shoreline Study
Alviso Ponds & Santa Clara County Interim Feasibility Study
Other Participating Agencies: US Fish & Wildlife Service; California Department of Fish & Game; Alameda County Flood Control District

SBSP & Shoreline Study Integration: Public Access

| | |
|--|--|
| <p>SBSP</p> <ul style="list-style-type: none">• Public access and recreation compatible with wildlife goals | <p>Shoreline</p> <ul style="list-style-type: none">• Public access, education, and recreation in study area |
|--|--|

39

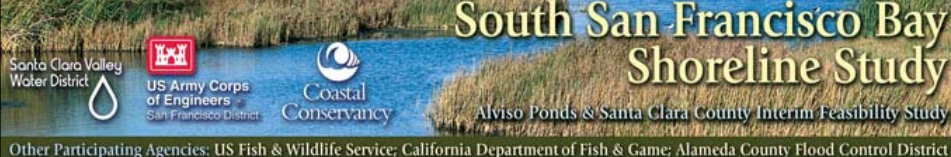


South San Francisco Bay Shoreline Study
Alviso Ponds & Santa Clara County Interim Feasibility Study
Other Participating Agencies: US Fish & Wildlife Service; California Department of Fish & Game; Alameda County Flood Control District

SBSP & Shoreline Study Integration: Water & Sediment Quality

| | |
|---|--|
| <p>SBSP</p> <ul style="list-style-type: none">• Protect existing quality, and consider ecological risks of restoration | <p>Shoreline</p> <ul style="list-style-type: none">• Avoid, minimize or mitigate impacts to quality |
|---|--|

40

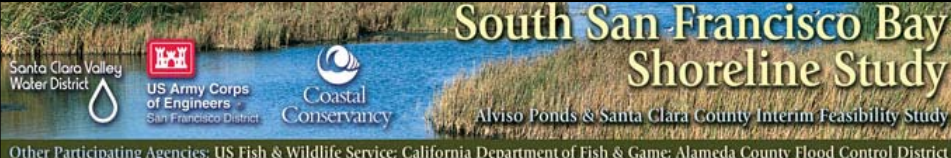


South San Francisco Bay Shoreline Study
Alviso Ponds & Santa Clara County Interim Feasibility Study
Other Participating Agencies: US Fish & Wildlife Service; California Department of Fish & Game; Alameda County Flood Control District

SBSP & Shoreline Study Integration: Vectors, Predation & Invasives

| | |
|--|---|
| SBSP <ul style="list-style-type: none">• Maintain or improve vector management• Control predation• Manage spread of invasives | Shoreline <ul style="list-style-type: none">• Avoid, minimize or mitigate impacts to:<ul style="list-style-type: none">– Vector populations– Predator access• Reduce/control invasives |
|--|---|

41

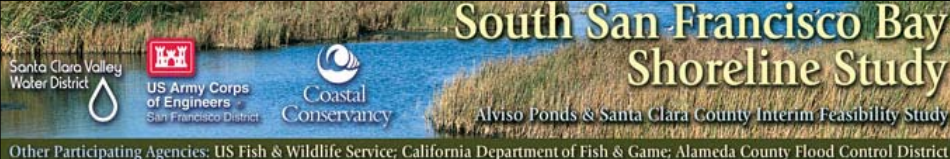


South San Francisco Bay Shoreline Study
Alviso Ponds & Santa Clara County Interim Feasibility Study
Other Participating Agencies: US Fish & Wildlife Service; California Department of Fish & Game; Alameda County Flood Control District

SBSP & Shoreline Study Integration: Infrastructure

| | |
|---|---|
| SBSP <ul style="list-style-type: none">• Protect services provided by infrastructure | Shoreline <ul style="list-style-type: none">• Avoid, minimize or mitigate impacts to infrastructure function |
|---|---|

42

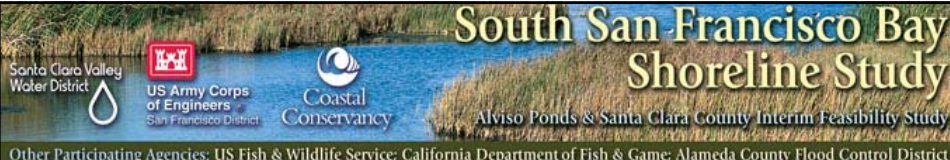


The banner features a background image of a bay with reeds. On the left, it lists the logos for Santa Clara Valley Water District, US Army Corps of Engineers San Francisco District, and Coastal Conservancy. The title 'South San Francisco Bay Shoreline Study' is prominently displayed in the center-right. Below the title, it reads 'Alviso Ponds & Santa Clara County Interim Feasibility Study'. At the bottom of the banner, it lists 'Other Participating Agencies: US Fish & Wildlife Service; California Department of Fish & Game; Alameda County Flood Control District'.

Shoreline Project Schedule

- Public Scoping Meeting – January 2006
- Complete Future W/O Project Conditions Analysis – June 2008
- Measures Identification & Alternative Formulation – April 2007 through May 2010
- Draft Integrated Feasibility Report and EIS/R – May 2010
- Public Meeting on Draft Feasibility Report and EIS/R – July 2010
- Final Integrated Feasibility Report and EIS/R – November 2010
- Chief's Report Signed – July 2011

43



The banner features a background image of a bay with reeds. On the left, it lists the logos for Santa Clara Valley Water District, US Army Corps of Engineers San Francisco District, and Coastal Conservancy. The title 'South San Francisco Bay Shoreline Study' is prominently displayed in the center-right. Below the title, it reads 'Alviso Ponds & Santa Clara County Interim Feasibility Study'. At the bottom of the banner, it lists 'Other Participating Agencies: US Fish & Wildlife Service; California Department of Fish & Game; Alameda County Flood Control District'.

Questions?

44



**South Bay Salt Pond
Restoration Project**

Outreach Opportunities

**Contact Tracy Grubbs
at
t.grubbs@sbcglobal.net**

45